

2/265 Wharf Road Newcastle NSW

Modern commercial offices available to lease early 2018.
Superbly fitted out (to Government specifications).
These offices are located opposite Newcastle Harbour with
magnificent uninterrupted water views, park like grounds
and cycle paths.

Features are:

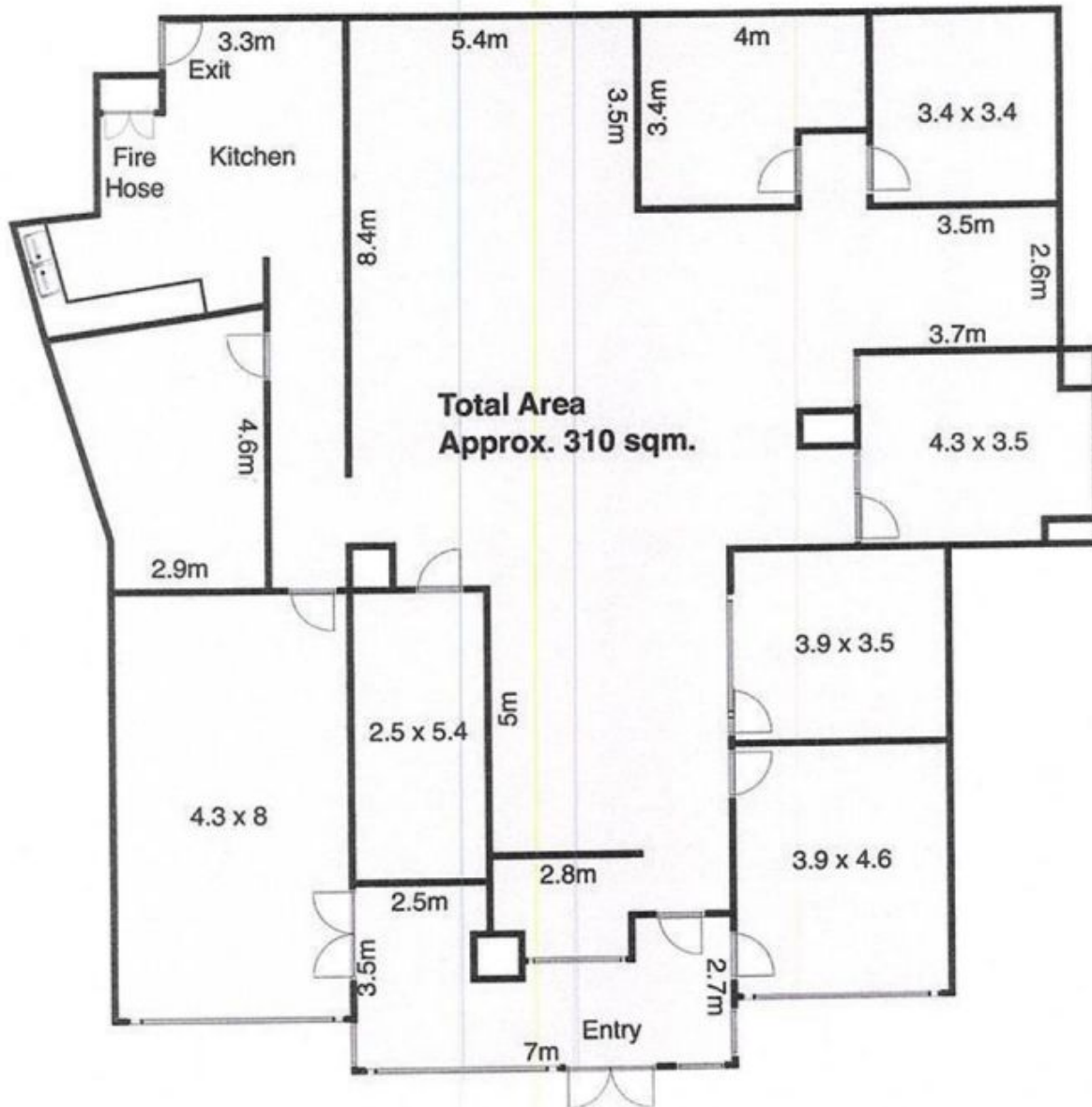
Ducted air conditioning

7 partitioned offices including formal reception area and
open office area

Kitchen (fully fitted out)

[For full version visit the website](https://www.street.net.au/lease/nsw/newcastle-region/newcastle/commercial/offices/7949882)

Type	: Offices
Building Size	: 310 sqm
Land Size	: 310 sqm
View	: https://www.street.net.au/lease/nsw/newcastle-region/newcastle/commercial/offices/7949882



Suite 2, 265 Wharf Road,
Newcastle

Measurements are approximate and are to be used as a guide only



STREET
PROPERTY GROUP