

Street Property.



1405/464 King Street Newcastle West NSW

3 3 2

Rising high above the Newcastle West streetscape, the award-winning 'Verve' apartments stand as a testament to effortless suburban living. Nestled on the fourteenth floor's south-western corner, this exquisite residence offers sweeping vistas that stretch as far as the eye can see, encompassing the Pacific Ocean, city skyline, and Watagan mountains, with each evening graced by the most enchanting sunsets.

An impressive layout features three robed bedrooms served in style by a trio of fully tiled bathrooms all anchored by the spacious open plan living area. Encompassing a Miele appointed island kitchen, the apartment hugs the south-western corner opening to a sheltered alfresco terrace that appears to float about National Park below. Two secure parking spaces and a storage cage ties the bow.

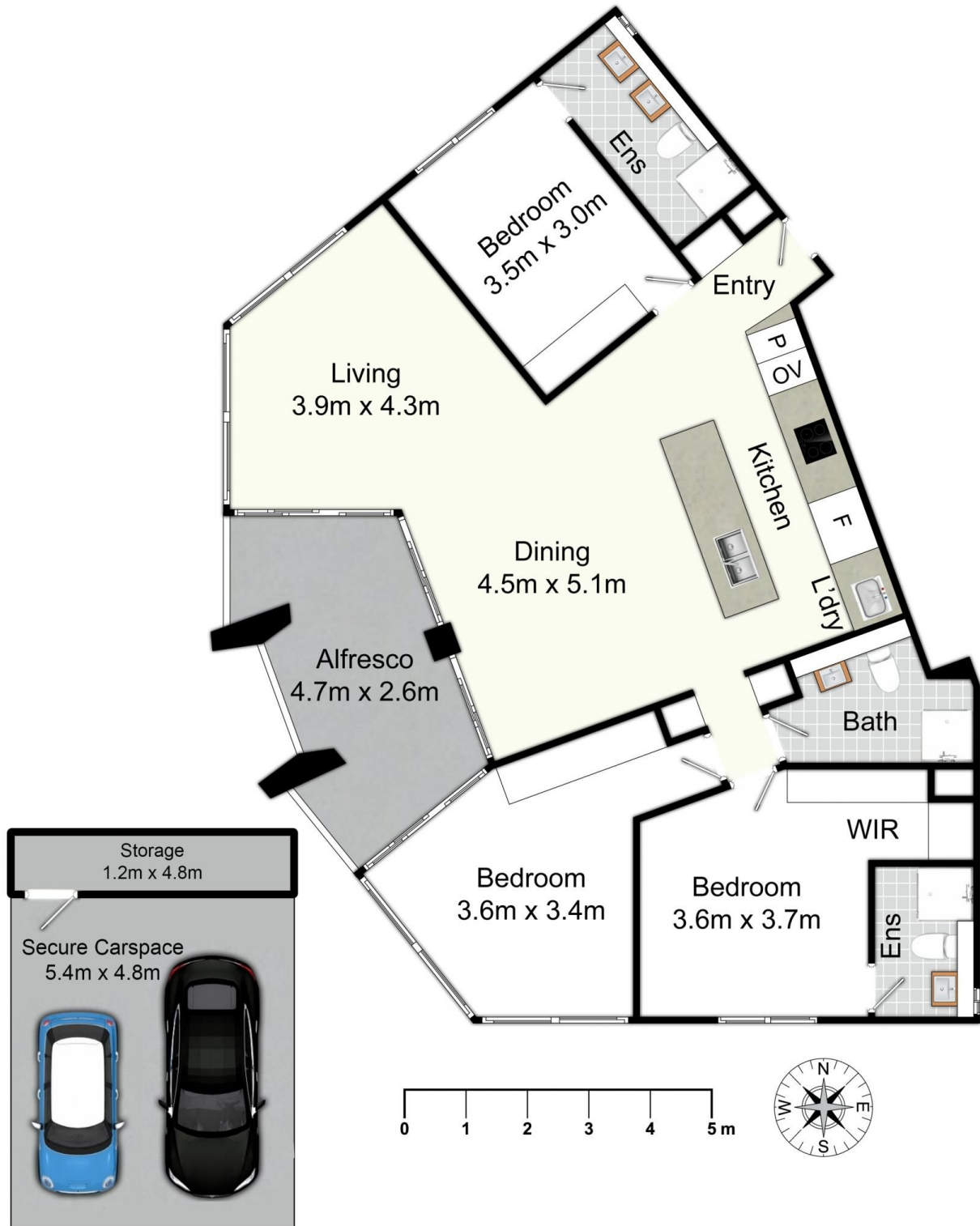
Price : Contact Agent
Building Size : 133 sqm
Land Size : 165 sqm
View : <https://www.street.net.au/sale/nsw/newcastle-region/newcastle-west/residential/apartment/7982035>



Damon Sellis
02 4926 3933



Drew Eather
02 4926 3933



1405/464 King St, Newcastle West

All information contained herein is gathered from sources we deem reliable. However, we cannot guarantee its accuracy and act as a messenger only in passing on the details. Interested parties should rely on their own inquiries and the contract for sale. The floor plans are artist's impressions only. The site plan is not to scale.

Street
Property.